

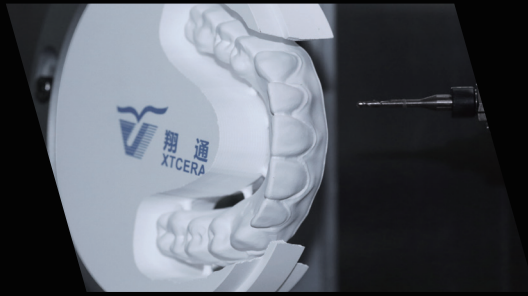
# 500 PLUS MILLING MACHINE

*\* Your intelligent 5 axes dental  
milling machine*

- ◆ *\*It can work with materials up to 40 mm thick*
- ◆ Outstanding performance with a highly sealed processing chamber for better dust-proofing and accuracy as high as 2 microns
- ◆ Intelligent monitoring with stronger situational awareness, warning of work status and malfunctions, and convenient remote control operation
- ◆ Wide applicability to process various materials, including fast cutting for hard materials
- ◆ Safety ensured with automatic start-stop when opening/closing doors to reduce safety hazards and automatic restart after interruption
- ◆ Outstanding appearance with a simple and sleek design, glossy surface finish, and easy-to-clean surface

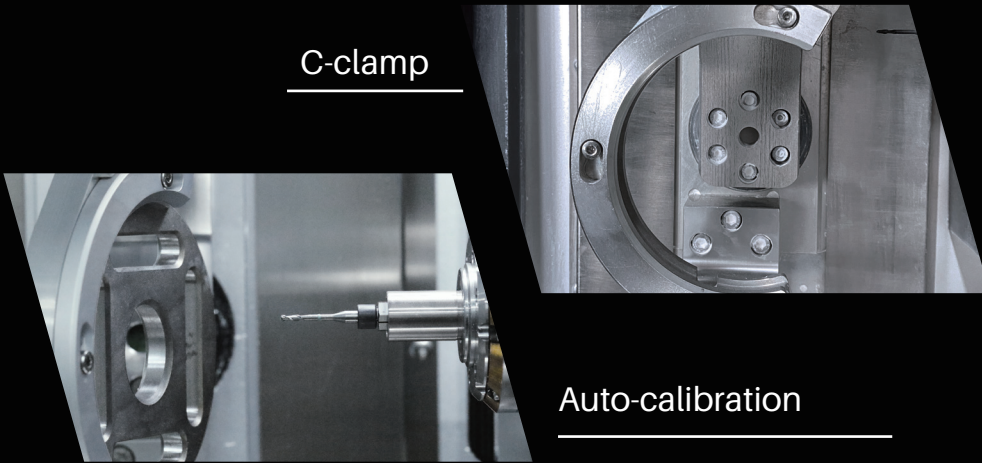


Name:	500 Plus Milling Machine
Dimension:	630X730X700(mm)
Net weight:	197kg
Input voltage:	AC 220V
Spindle power:	1.8kw
Axis quantity:	5
Milling range:	XYZ: 110/160/80mm A: ±30° B: 360°
Repeated positioning accuracy :	3μm
Milling mode:	Dry milling
Max speed:	60,000 rpm
Max feeding speed:	XYZ: 6000 mm/min
Bur capacity:	8
Bur changing:	Automatic
Spindle cooling:	Water cooling
Materials:	Zirconia, Wax, PMMA, PEEK, Soft metal
Milling time:	Zirconia crown: 8mins, Wax: 3mins, PMMA: 10mins, PEEK: 10mins, Soft metal: 10mins



90° facial milling

C-clamp

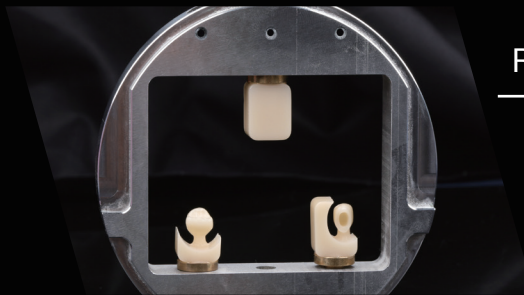


Auto-calibration

PMMA full denture



Resin block adaptor



Denture base

